

MULTIPLEXER

DMUX-500i

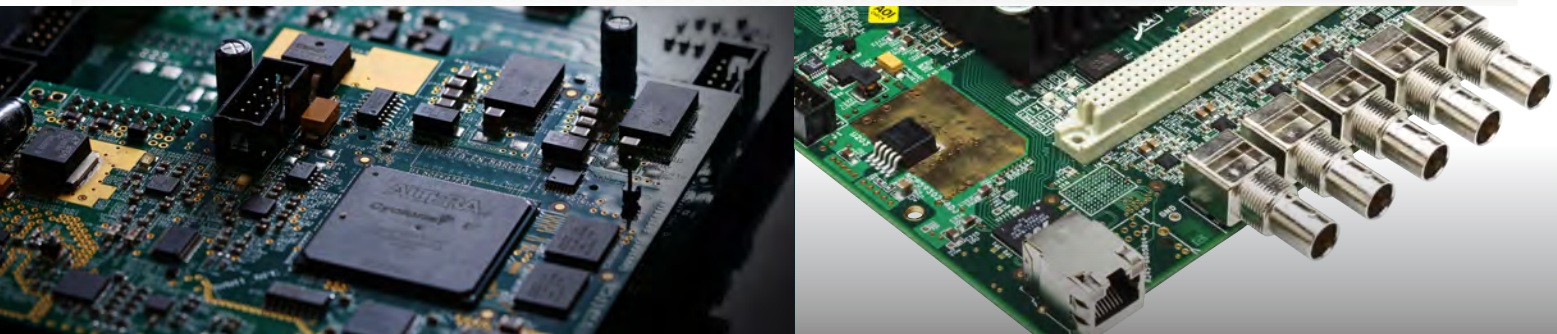
ISDB-T INTERNATIONAL STANDARD

► Ideal for repeaters

- Cost-effective, high performance
- Integrable with any transmitter that complies with the ISDB-T International Standard

► Simple and Robust

- ASI and IP inputs, with automatic redundancy
- Duplicate BTS output



MAIN FEATURES

- ISDB-T Multiplexer compatible with MPEG and ISDB-T International standards
- BTS generation according to ARIB STD-B31 and ABNT NBR 15601
- Independent Ethernet Video and Control interfaces
- Manual and automatic PMT edition, allowing Closed Caption insertion, OAD, Ginga, etc.
- Compatible with ARIB TR-B14 operation guide, which guarantees its correct working with every receiver
- Service bit rate limiter
- Automatic redundancy for inputs and services
- EWBS signaling for emergency information
- Synchronization for Single Frequency Networks
- Software licensing
- Supports EPG, Closed Caption and Ginga servers, including SSA (Auxiliary Services Server) from VideoSwitch
- Non PC-based, embedded FPGA/Microprocessor

Multiplexer Equipment for Digital Terrestrial Television broadcasting stations compatible with MPEG and ISDB-T International multiplexing standards. Prepared to operate both in MFN and SFN networks.

It is capable of generating and retransmitting PSI and SI tables. It has 10 MHz and 1 PPS inputs and outputs for SFN networks synchronization and it can optionally house a GPS receiver in the same case

It has 1 Gigabit Ethernet (RJ-45) IP input/output interface and up to 4 ASI (BNC) inputs. All of them can be set as active or redundant.

It has 1 ASI / BTS output (2 BNC) and 1 ASI/BTS Monitoring output (BNC). It is also capable of generating the BTS over IP Unicast as well as Multicast.

The device incorporates a simple and intuitive Web-configuration interface that makes system management easier and provides a user-friendly graphical interface so that any person with basic knowledge may operate it. It also provides support for SNMP monitoring and control systems . In every case, there is an access control system so that only authorized users can operate it.



**DMUX-500i
ISDB-T MULTIPLEXER**

FUNCTIONS	<ul style="list-style-type: none"> • Multiplexing of up to 32 services • PIDs, Transports and Services remapping • Manual and automatic PMT edition • BTS generation in compliance with ARIB STD-B31 and ABNT NBR 15601 • Generation and retransmission of PSI and SI tables according to ABNT NBR 15603 • Correction and re-stamping of PCRs • Automatic redundancy of inputs and services, with internal switch-over (L) • Automatic EIT editing for Service ID correction (L) • Synchronization for SFN networks (L) • Bitrate Limiter for Entry and Service (L) • EWBS (Emergency Warning Broadcast System) signaling for Emergency Information (L) • Clean Service Switching (L) • Optional: Integrated GPS receiver for internal generation of 10 MHz and 1 PPS references [G]
DATA INTERFACES	<ul style="list-style-type: none"> • 1 x GbE UDP/IP Input / Output (1 x RJ45) • Supports 188 and 204 bytes TS packets • Supports up to 248 SPTS/MPTS Inputs over IP Unicast/Multicast + 4 SPTS/MPTS Inputs over ASI (4 x BNC) • 1 x Duplicate ASI-BTS Output (Main + Backup) (2 x BNC) • 1 x ASI BTS (Monitoring) (1 x BNC)
REFERENCES	<ul style="list-style-type: none"> • Input and Output (Active Loop) of 10MHz and 1PPS • High precision Internal Oscillator with Hold Over • Optional: Integrated GPS receiver [G]
CONTROL	<ul style="list-style-type: none"> • Software and Firmware management and update through a user-friendly and intuitive Web Interface • User control for access restriction • Indication of the global status of the device with alarms and error log. • RS-232 port for service and maintenance • Monitoring and control via SNMP protocol (L)
GENERAL	<ul style="list-style-type: none"> • 1 UR 19 "x 160mm (depth) - Fixed internal Power Supply • Maximum Power Consumption 20W (depending on the addition of optional features) • Power supply: 85-264VAC (47Hz-63Hz)

(L): Software Licensing