

MODULATOR

DMOD-1000i **DMOD-2000i**

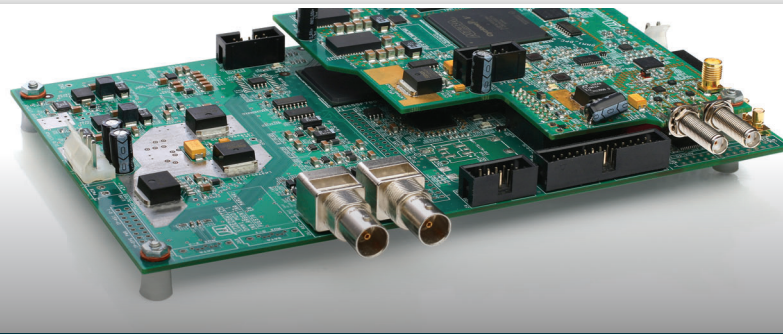
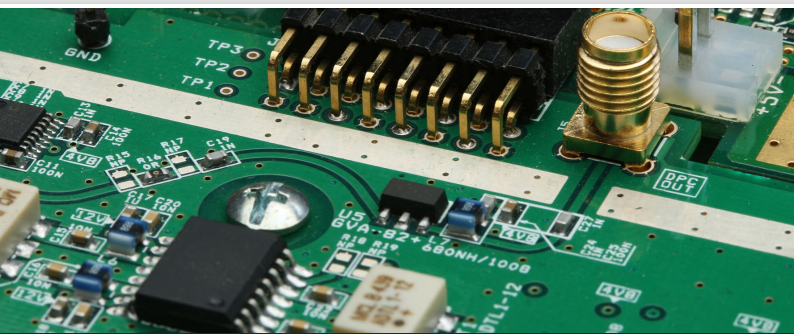
ISDB-Tb STANDARD

► Different Hardware Configurations

Allowing to adapt to your needs

► Configurations and Monitoring via Web interface

Through a user-friendly and intuitive GUI



VideoSwitch has developed a set of devices to meet the needs of the new Digital Terrestrial Television Broadcasting Stations.

- **A WIDE VARIETY OF OPTIONS**
That can cover from small low-budget channels to SFN systems with national coverage.
- **GREAT STURDINESS AND RELIABILITY**
In every case, the devices are characterized by their sturdiness and reliability. They can also be configured and monitored via Web Server, enabling operators to configure them remotely and allowing VideoSwitch to give efficient technical support through the engineers that developed the equipment.

Modulator Equipment for Digital Terrestrial Television broadcasting stations compatible with ISDB-Tb modulating standards. It is specially designed to operate both in VHF and UHF and in MFN and SFN systems with the addition of optional modules, which makes it a very versatile device that can adapt to the needs of any client.

It can be configured with ASI or IP Gigabit Ethernet (optional) inputs, and in both cases it can provide a second redundant input. In any case, the inputs can have either TS or BTS format. It also has 10 MHz and 1 PPS inputs and outputs for SFN operation.

The modularity of this equipment allows the addition of functionalities such as: internal GPS receiver, adaptive pre-corrector for the optimization of power transmitter use, and a 75 Ohms output in order to be used in CATV networks.

This device, as well as the Multiplexer, can be configured and monitored via Web interface and SNMP, besides using the front panel. In this case, it also features automatic configuration via BTS as established by ISDB-Tb standard.



DMOD-1000i / 2000i
ISDB-TB MODULATOR / EXCITER

FUNCTIONS

- COFDM modulation in compliance with ARIB STD-B31 and ABNT 15601
- Configurable with ASI or IP GbE (optional) inputs
- Remote and autonomous configuration via BTS
- Selectable frequency from 50MHz to 863MHz
- Redundant inputs
- Synchronization for SFNs
- Optional: 75 Ohms output to CATV network
- Optional: Adaptive correction for transmitters
- Support EWS/EWBS (Emergency Warning Broadcast System)
- Optional: Embedded GPS receiver for internal generation of 10 MHz and 1 PPS References

INPUTS

- ASI: 2 Inputs (Main + Backup)
- Optional: 2 IP GbE Inputs (Main + Backup)

REFERENCES

- Input and Output (Active Loop) of 10 MHz and 1 PPS
- High accuracy Internal Oscillator with Hold Over
- Optional: Embedded GPS receiver
- Optional: 2 x Feedback inputs from the transmitter for adaptive correction

OUTPUTS

- Off-Air :1 x RF (Power) +13dBm
- CATV: 1 x RF (Power @ 75 Ohms) +3dBm
- 1 x RF (Monitoring) -20dBc

CONTROL

- Software and Firmware management and update through a user-friendly and intuitive Web Interface
- User control for access restriction
- Front panel for basic configuration
- Errors and Alarms Log
- RS-232 port for servicing and maintenance
- Monitoring and control through SNMP protocol
- Dual Ethernet interface for control and monitoring (only 2000i model)

OPTIONAL MODULES

- Digital Adaptive Pre-Corrector Linear and Non Linear (UHF only)
- 2 x IP Gbe ports (Main + BackUp)
- Embedded GPS receiver

GENERAL INFO

- 1000i model: 1 UR 19" x 250mm (depth) - Single fixed Power Supply
- 2000i model: 1 UR 19" x 480mm (depth) - 2 x Redundant Hot-Swap Power Supplies
- Maximum Power Consumption: 55W (depending on options)